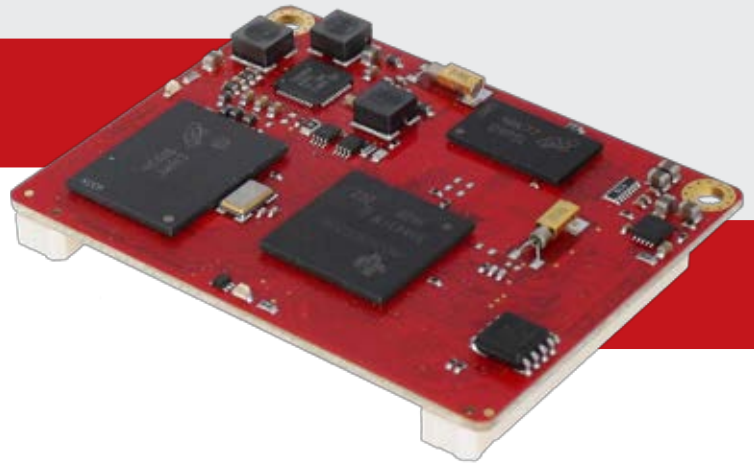




piA-AM335x-PM



Features

- Processor Module
- AM335x ARMv7 Cortex™-A8
- up to 1GHz
- eMMC
- Small size 60 x 45mm
- User-configurable interfaces
- Wide variety of mounting options
- 5V Power supply
- Ångström Linux (Android, Windows EC and SYS/BIOS RTOS on request)
- Kernel 2.6.37 and 3.2.x
- Open-Source SDK



Overview

The piA-AM335x-PM is a processor module, based on the Cortex™-A8 32-bit ARM® architecture.

The module provides a low cost and flexible base for the development of AM335x-based devices.

As a powerful and compact module, the piA-AM335x-PM is ideal for the use in industrial environment. Due to its small size (60 x 45mm) and the freely configurable interfaces, a quick and easy system development is possible. The interfaces of the processor (Ethernet, USB, CAN, UART, GPIO, SPI, I²C, etc.) are connected via two 100-pin edge connectors to the baseboard.

Applications

- Industrial Automation
- Medical Technology
- Data logger
- Industrial process and control

Advantages

- Accelerated development of your product
- Numerous applications due to high number of configurable interfaces
- Quick and easy system integration

Details

Basics

Processor	Sitara™ AM335x ARM Cortex-A8 microprocessor (MPU) up to 1GHz Cortex™-A8 Core up to 2000 MIPS Crypto Hardware Accelerators (AES, SHA, PKA, RNG)
RAM	up to 512MB DDR3 SDRAM
Flash	up to 16 GB eMMC, 128Mbit NOR Flash, FRAM

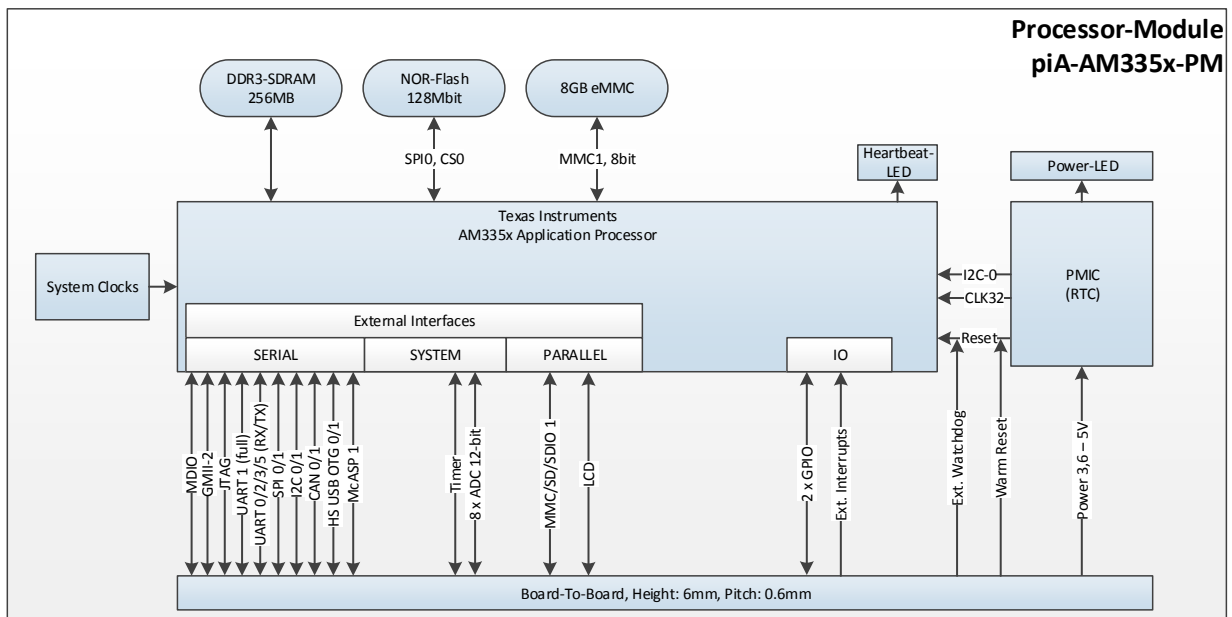
Interfaces & Features

Ethernet	2 x 10/100/1000 Mbps Ethernet MAC
Display	24-bit LCD Interface
ADC	7 x ADC, 12-bit
CAN-Interface	up to 2 x CAN
UART	up to 6 x UART
USB	2 x USB Ports
Audio	up to 2 x 4-Kanal McASPs
Internal Communication	up to 2 x SPI, up to 3 x I ² C
GPIO	up to 96 3.3V GPIO
LED	Status LED Power Good LED
RTC	Real Time Clock

Other Features

Dimensions	60mm x 45mm
Power Supply	5V ± 5%
Temperature Range	-40°C - +85°C

Block Diagram



Functional Block Diagram for piA-AM335x-PM

Software & Documentation

- Ångström Linux, Kernel 2.6.37 and 3.2.x
- Open-Source SDK with board-specific libraries
- Hardware Documentation
- Software Documentation

*** Base Board Development on request**